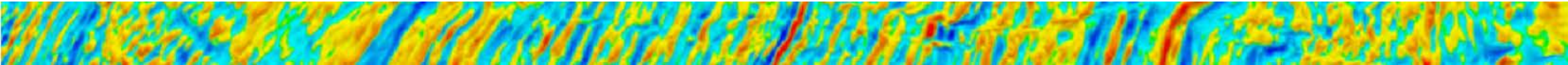


COLLÈGE
DE FRANCE
— 1530 —

CNEXO and Ifremer:
over fifty years of worldwide
marine scientific research
and exploration of the
French EEZ

Walter Roest
Ifremer, France

50 Years of Plate Tectonics: Then, Now, and Beyond
Paris, 5 – 26 June 2018



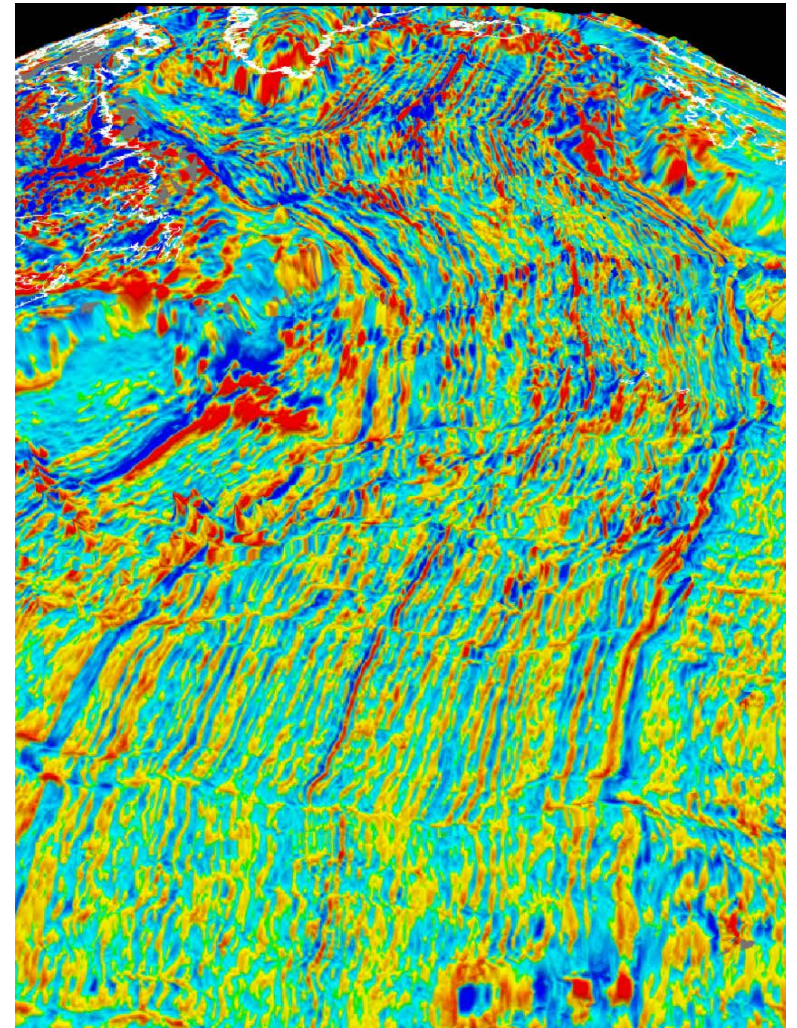
*When I started my research career in 1959, we did not even know about the mid-ocean ridge, the largest structure on our planet, 60,000 kilometers long. [...] It was the **exploration of the oceans** that led to the development of plate tectonics in the 1960s, offering for the first time **a coherent quantitative model** of the evolution of our planet. Paradoxically, this model, still very schematic, **relied on entirely oceanic data***

Citation: X. Le Pichon, date ?



CNEXO and Ifremer

- Early days
- Plate Tectonics: from the global scale to in situ observations
- Science and technology for exploration of the ocean
- Law of the sea and the continental shelf
- Conclusion



Sea-Floor Spreading and Continental Drift¹

XAVIER LE PICHON²

*Lamont Geological Observatory, Columbia University
Palisades, New York 10962*

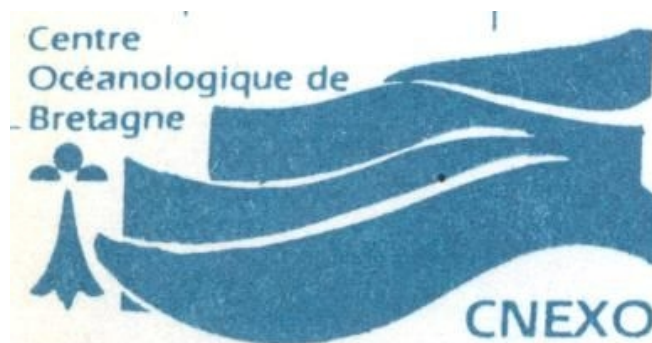
¹ Lamont Geological Observatory Contribution
1197.

² Now at CNEOX, 39 Avenue d'Iéna, Paris, 16,
France.

CNEXO

Centre National pour l'EXploitation des Océans

- CNEXO was one of several research institutions created by law n ° 67-7 of January 3, 1967 by General de Gaulle and Georges Pompidou
- CNEXO was a public institution of industrial and commercial character
- The mission of the CNEXO was to develop knowledge of the oceans and research studies aimed at exploiting the resources contained on their surface, in their mass, their soil and their subsoil.



Oceanographic Vessel Jean Charcot

Launched in 1965 for Comexo (Oceans Exploitation Committee), which became CNEXO and then Ifremer





Creation of Ifremer Décret n°84-428, 5 juin 1984

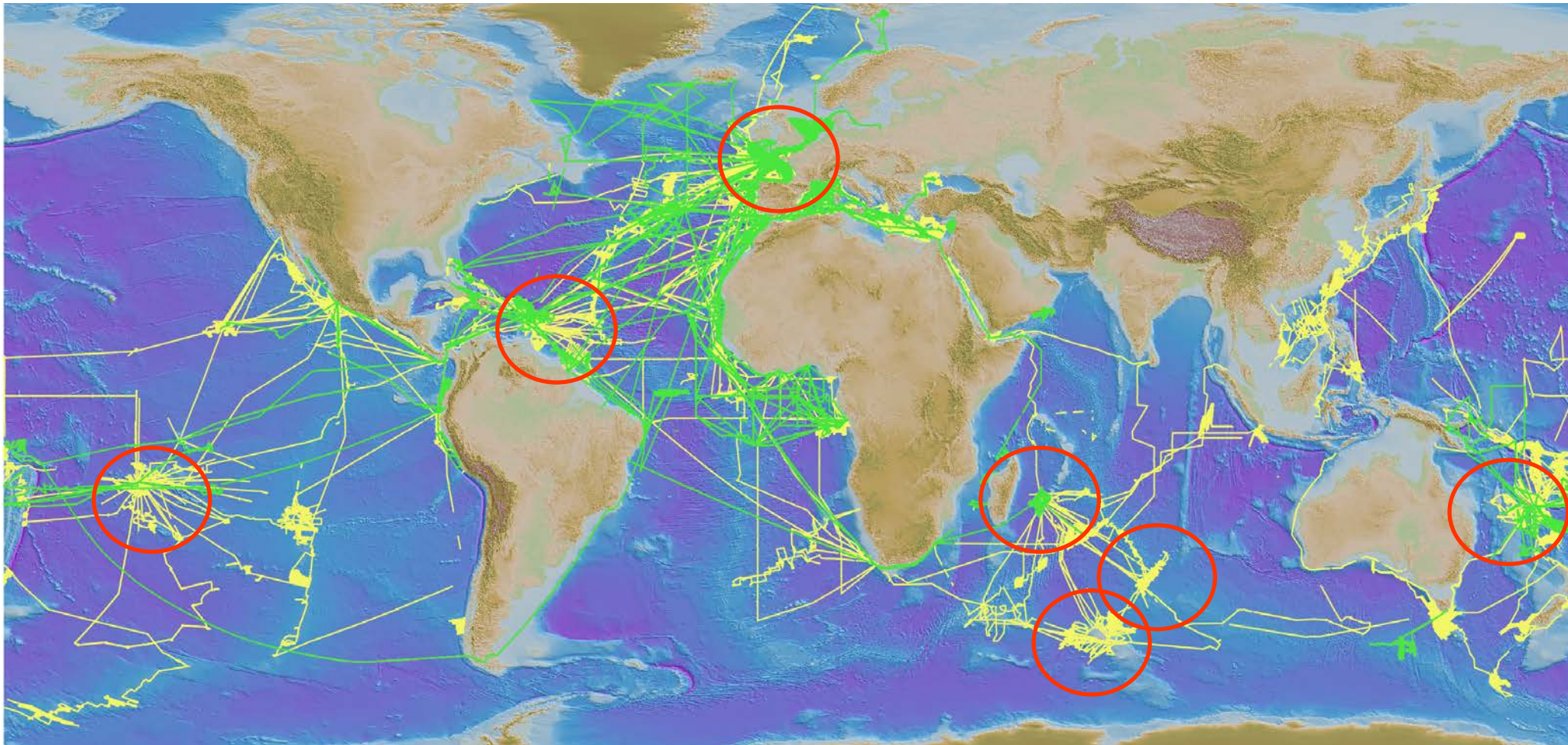
The mission of Ifremer (merger of CNEXO and ISTPM) is to lead and promote fundamental and applied research, expertise and technological and industrial development actions in order to:

- 1 Understand, evaluate and develop the resources of the oceans and to allow their sustainable exploitation;
- 2 Improve the methods of monitoring, forecasting evolution, protection and enhancement of the marine and coastal environment;
- 3 Promote the socio-economic development of the maritime world.

Note: Marine Geosciences represents ~ 6% of human resources



CNEXO/Ifremer geoscience ship tracks





Crustal structure of the mid-ocean ridges

Journal of Geophysical Research 1965 - 1966

1. Seismic refraction measurements LE PICHON, HOUTZ, DRAKE and NAFE
2. Computed model from gravity and seismic refraction data TALWANI, LE PICHON and EWING
3. Magnetic anomalies over the mid-Atlantic ridge HEIRTZLER AND LE PICHON
4. Sediment distribution in the South Atlantic Ocean and the Cenozoic history of the Mid-Atlantic Ridge EWING, LE PICHON AND EWING
5. Heat flow through the Atlantic Ocean floor and convection currents LANGSETH, LE PICHON AND EWING



Crustal structure of the mid-ocean ridges

Journal of Geophysical Research 1965 - 1966

1. Seismic refraction measurements LE PICHON, HOUTZ, DRAKE and NAFE
observations [...] should be taken into account in any theory on the formation of the mid-ocean ridge
2. Computed model from gravity and seismic refraction data TALWANI, LE PICHON and EWING
3. Magnetic anomalies over the mid-Atlantic ridge HEIRTZLER AND LE PICHON
4. Sediment distribution in the South Atlantic Ocean and the Cenozoic history of the Mid-Atlantic Ridge EWING, LE PICHON AND EWING
5. Heat flow through the Atlantic Ocean floor and convection currents LANGSETH, LE PICHON AND EWING



Crustal structure of the mid-ocean ridges

Journal of Geophysical Research 1965 - 1966

1. Seismic refraction measurements LE PICHON, HOUTZ, DRAKE and NAFE
observations [...] should be taken into account in any theory on the formation of the mid-ocean ridge
2. Computed model from gravity and seismic refraction data TALWANI, LE PICHON and EWING
the anomalous mantle, which provides compensation in the axial zone of the ridge, is postulated to extend to the flanks below the normal mantle observed
3. Magnetic anomalies over the mid-Atlantic ridge HEIRTZLER AND LE PICHON
4. Sediment distribution in the South Atlantic Ocean and the Cenozoic history of the Mid-Atlantic Ridge EWING, LE PICHON AND EWING
5. Heat flow through the Atlantic Ocean floor and convection currents LANGSETH, LE PICHON AND EWING



Crustal structure of the mid-ocean ridges

Journal of Geophysical Research 1965 - 1966

1. Seismic refraction measurements LE PICHON, HOUTZ, DRAKE and NAFE
observations [...] should be taken into account in any theory on the formation of the mid-ocean ridge
2. Computed model from gravity and seismic refraction data TALWANI, LE PICHON and EWING
the anomalous mantle, which provides compensation in the axial zone of the ridge, is postulated to extend to the flanks below the normal mantle observed
3. Magnetic anomalies over the mid-Atlantic ridge HEIRTZLER AND LE PICHON
The high heat flow belt has a detectable effect on the magnetic field.
4. Sediment distribution in the South Atlantic Ocean and the Cenozoic history of the Mid-Atlantic Ridge EWING, LE PICHON AND EWING
5. Heat flow through the Atlantic Ocean floor and convection currents LANGSETH, LE PICHON AND EWING



Crustal structure of the mid-ocean ridges

Journal of Geophysical Research 1965 - 1966

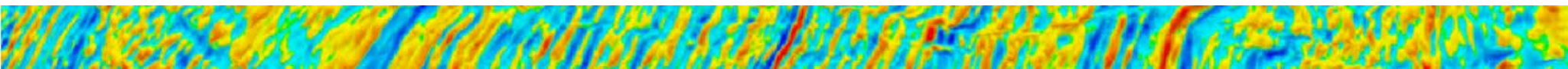
1. Seismic refraction measurements LE PICHON, HOUTZ, DRAKE and NAFE
observations [...] should be taken into account in any theory on the formation of the mid-ocean ridge
2. Computed model from gravity and seismic refraction data TALWANI, LE PICHON and EWING
the anomalous mantle, which provides compensation in the axial zone of the ridge, is postulated to extend to the flanks below the normal mantle observed
3. Magnetic anomalies over the mid-Atlantic ridge HEIRTZLER AND LE PICHON
The high heat flow belt has a detectable effect on the magnetic field.
4. Sediment distribution in the South Atlantic Ocean and the Cenozoic history of the Mid-Atlantic Ridge EWING, LE PICHON AND EWING
[...] late Cenozoic [...] there is no reason to believe that significant continental drift or expansion occurred during this time
5. Heat flow through the Atlantic Ocean floor and convection currents LANGSETH, LE PICHON AND EWING



Crustal structure of the mid-ocean ridges

Journal of Geophysical Research 1965 - 1966

1. Seismic refraction measurements LE PICHON, HOUTZ, DRAKE and NAFE
observations [...] should be taken into account in any theory on the formation of the mid-ocean ridge
2. Computed model from gravity and seismic refraction data TALWANI, LE PICHON and EWING
the anomalous mantle, which provides compensation in the axial zone of the ridge, is postulated to extend to the flanks below the normal mantle observed
3. Magnetic anomalies over the mid-Atlantic ridge HEIRTZLER AND LE PICHON
The high heat flow belt has a detectable effect on the magnetic field.
4. Sediment distribution in the South Atlantic Ocean and the Cenozoic history of the Mid-Atlantic Ridge EWING, LE PICHON AND EWING
[...] late Cenozoic [...] there is no reason to believe that significant continental drift or expansion occurred during this time
5. Heat flow through the Atlantic Ocean floor and convection currents LANGSETH, LE PICHON AND EWING
absence of a wide heat-flow maximum [...] precludes the possibility of continuous continental drift during the Cenozoic by the spreading-floor mechanism in the Atlantic



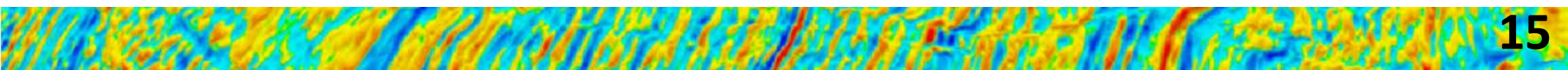
Sea-Floor Spreading and Continental Drift¹

XAVIER LE PICHON²

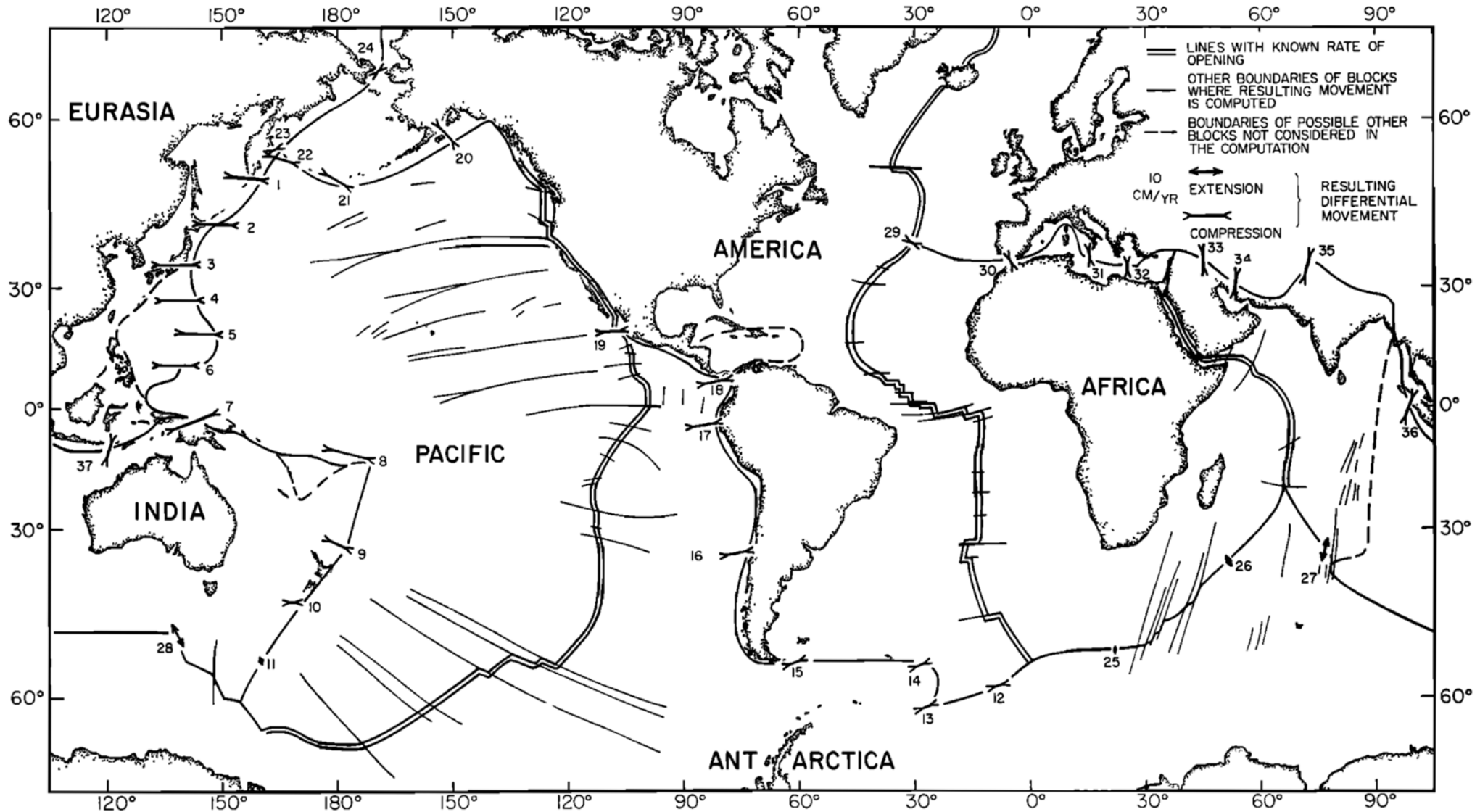
~ 30 spreading rate determinations from magnetic anomalies

~ 60 spreading azimuths from fracture zones

Best fit model for 6 rigid plates



Sea-floor spreading and continental drift



Le Pichon, JGR, 1968



Plate Tectonics

- A coherent quantitative model of the evolution of our planet
- Tectonic plates include continents and oceans
- Ability to make predictions and test hypothesis
- Largely beyond geology
 - Hazards
 - Paleo circulation
 - Paleo climate
 - Marine biology
 - Natural resources



Expansion of the French Fleet

- In 1965, *Coriolis* for the Pacific Ocean, then in 1966 *Pélagia* to support coastal research.
- In 1968 *Capricorn* began work in the tropical Atlantic, then the *Cryos* to support the fishing effort in the mouth of the St. Lawrence and off Newfoundland.
- In 1971, the first multipurpose vessel was commissioned, *Le Noroît*, and four years later *Le Suroît* was built to facilitate exploration surveys with light submersibles.
- Finally in 1974, the *Nadir* was launched to support heavier gear, such as the Archimedes bathyscaphe or the Cyana manned submersible.



Exploring the oceans

NESTLANTE II, Jean CHARCOT, 1970

Most of the program has been carried out in the deep sea area and in the Barents Sea despite serious technical difficulties and sometimes difficult conditions.

The buoy test last night was disastrous.

The airgun, which had been made to work for 3 hours, died again. A leak in the chamber. We will take it apart again today.

The magnetometer is still broken.

The results obtained with the buoys in particular are clearly superior to those of Lamont and should allow a fairly clear structural interpretation.

Chief Scientist, Le Pichon

Exploring the oceans

CYANHEAT, Nadir, 1979



© Ifremer



© Ifremer - Vic CHAPRON



FAMOUS

- In 1971, Xavier Le Pichon, head of the Scientific Department, COB, CNEXO wrote a letter to Woods Hole geologist Ken Emery and proposed a joint U.S.-French expedition to explore the axis of the Mid-Atlantic Ridge using manned submersibles (two years after Apollo 11)
- France had the 200-ton bathyscaphe *Archimède* operated by the Navy and was building a smaller submersible called *Cyana*. The U.S. had the Navy-owned, 15-ton *Alvin*, developed by engineers at Woods Hole
- After significant resistance, operations started in 1973

Source: WHOI, 2017

FAMOUS

Xavier Le Pichon with Claude Riffaud, Director of the COB, in front of the world ocean floor map



© CNEXO/Ifremer

- French-American Mid-Ocean Undersea Study
- Intense investigation of the Mid-Atlantic Ridge between 36° and 37° N
- Chief Scientists: Jim Heirtzler and Xavier Le Pichon
- Search for evidence of hydrothermal vents

FAMOUS

Archimède and *Cyana* completed 27 dives, *Alvin* 17, collecting 100,000 photos and 1500 kg of rock samples



Le Noroît and *Cyana* at night in the harbor,
Ponta Delgada, Açores, 1974 © Ifremer - Alain MASSOL

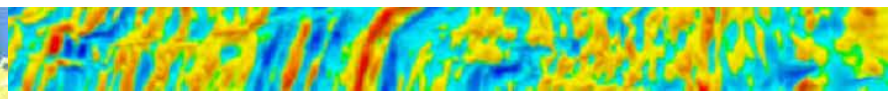
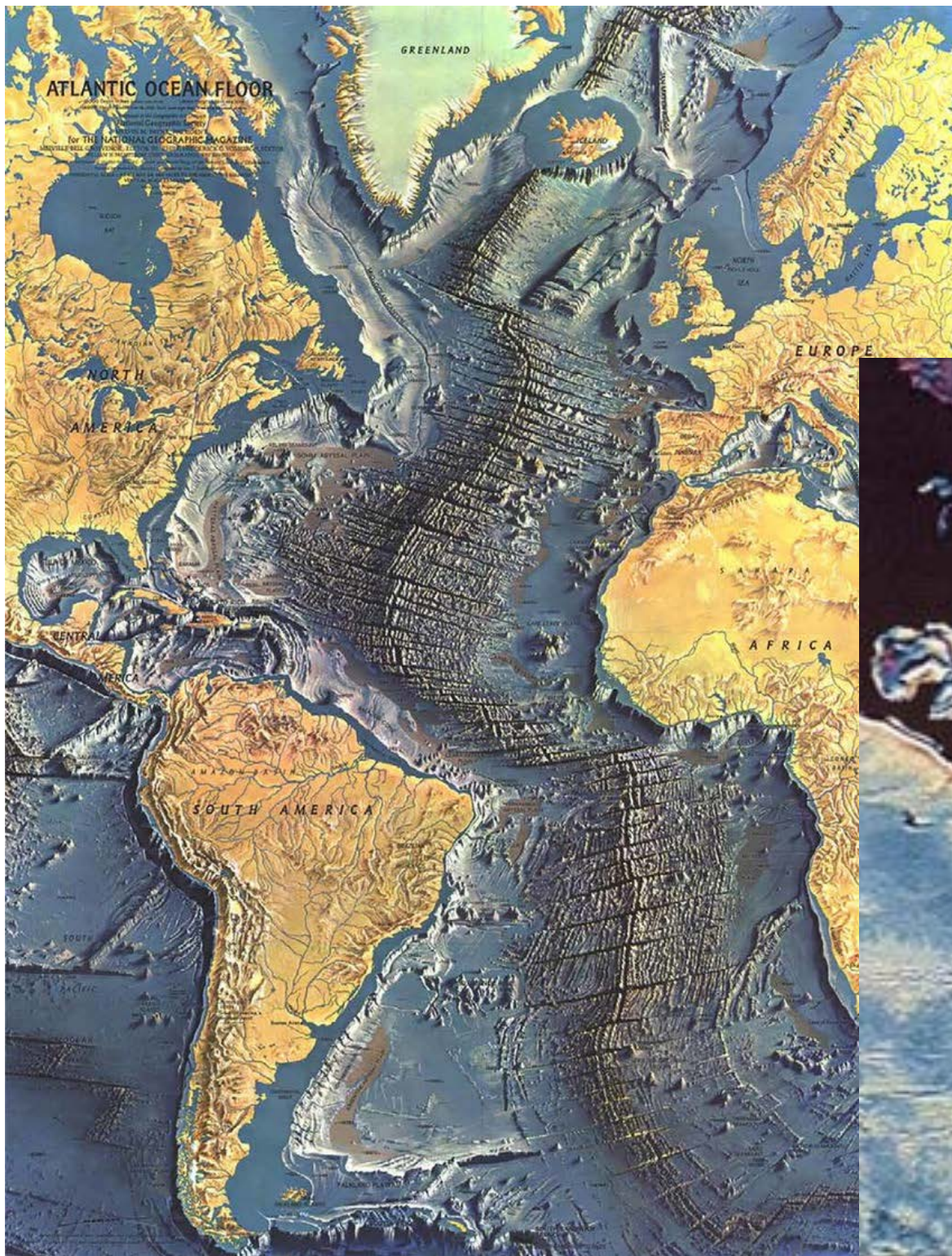
© Ifremer



Atlantic Ocean floor

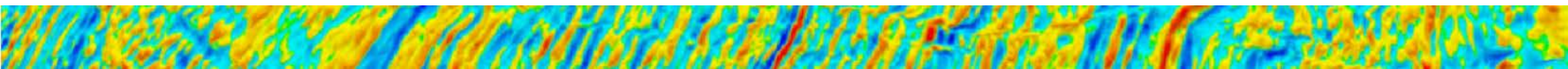
A map of the ocean floor, published in 1968 based on deep ocean soundings compiled and interpreted by Bruce Heezen and Marie Tharp, Lamont

Painted by Berann for National Geographic Magazine



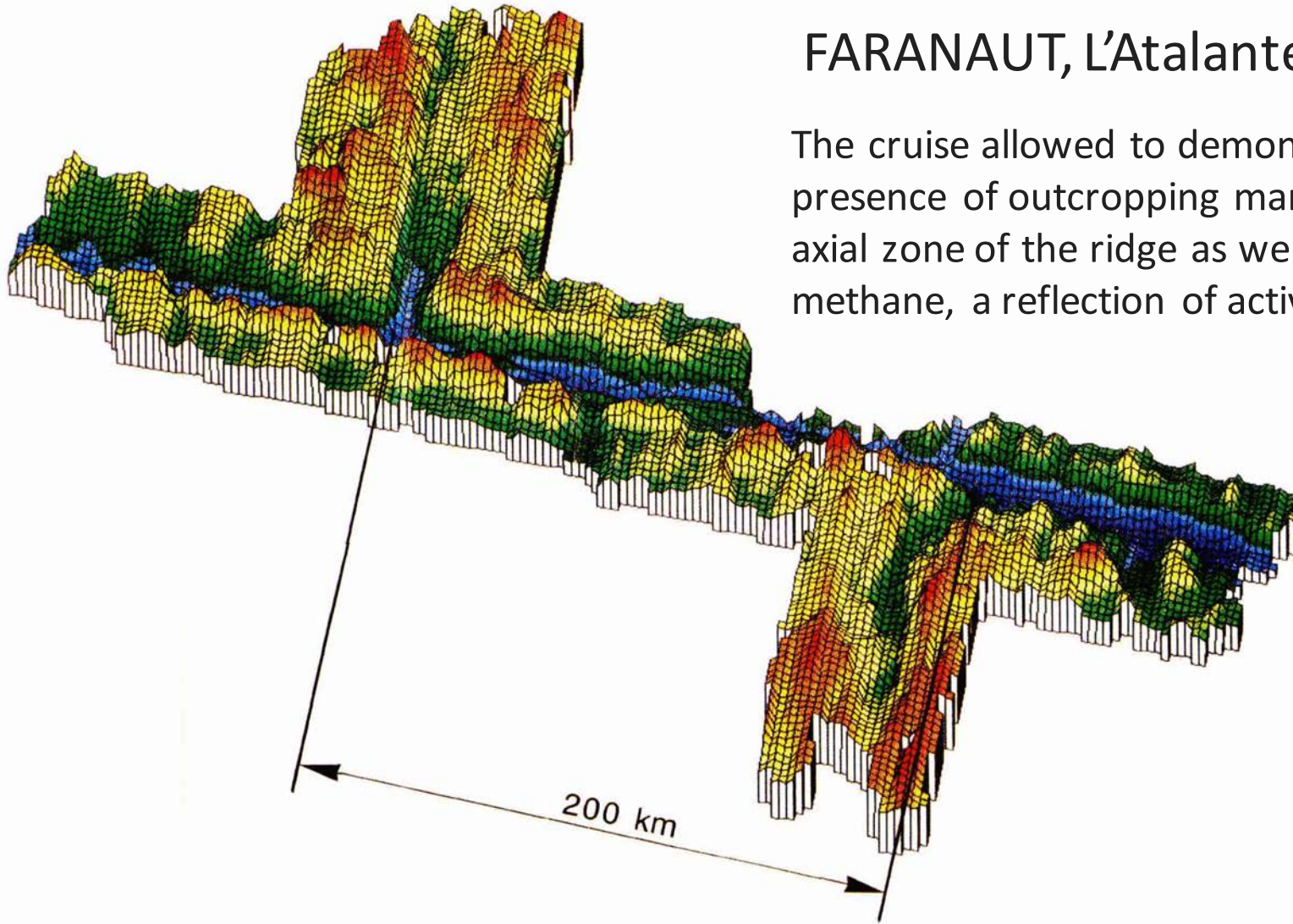
Gravity from Space: Radar Altimetry
William F. Haxby,
Lamont-Doherty Geological
Observatory
National Geographic, 1983





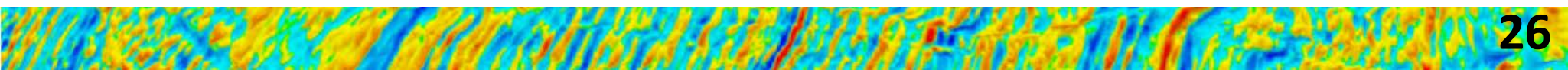
FARANAUT, L'Atalante 1992

The cruise allowed to demonstrate the presence of outcropping mantle rocks in the axial zone of the ridge as well as the release of methane, a reflection of active processes

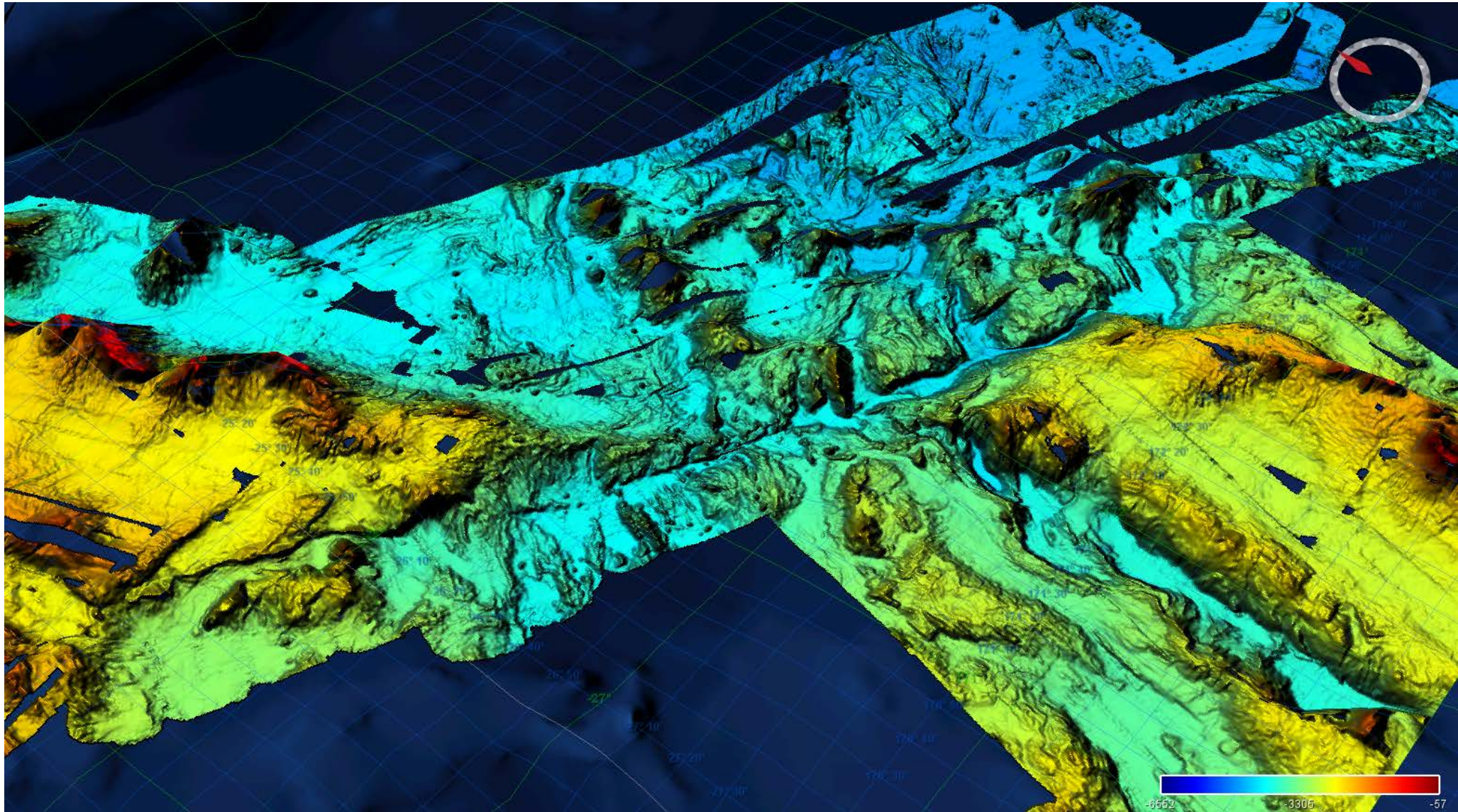


Complete map of the $15^{\circ}20'$ N fracture zone and the intersections with the mid-Atlantic ridge axis (SIMRAD EM 12 multibeam sounder)

Annual report Ifremer 1992



Cook FZ, Zelandia, 2005



2012

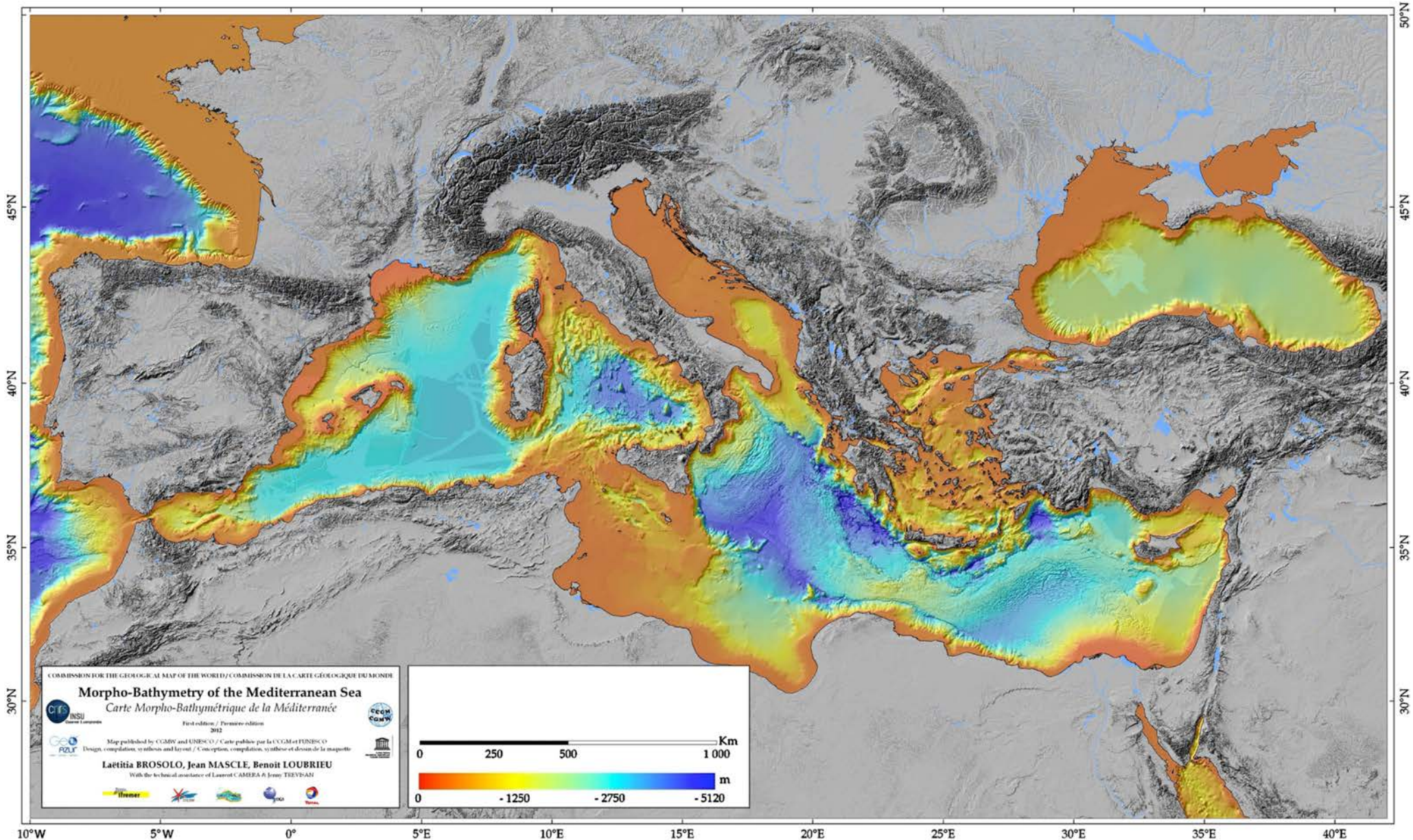
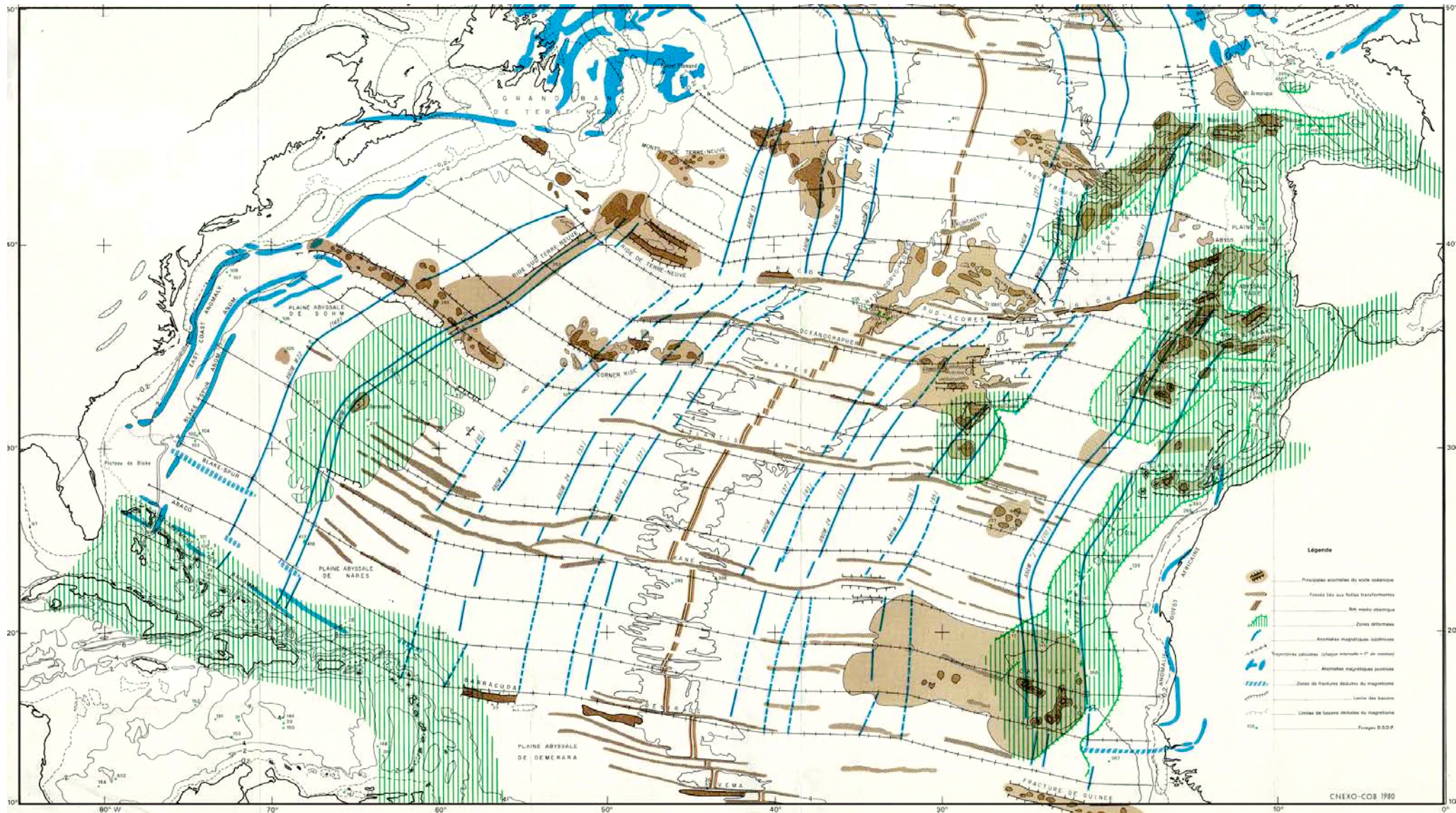
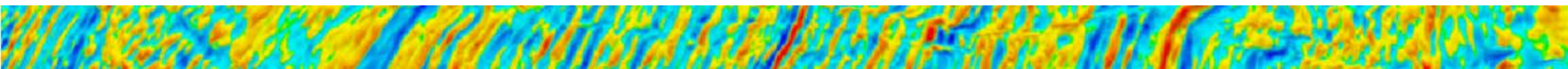


Plate kinematics of North and Central Atlantic



Olivet, 1984

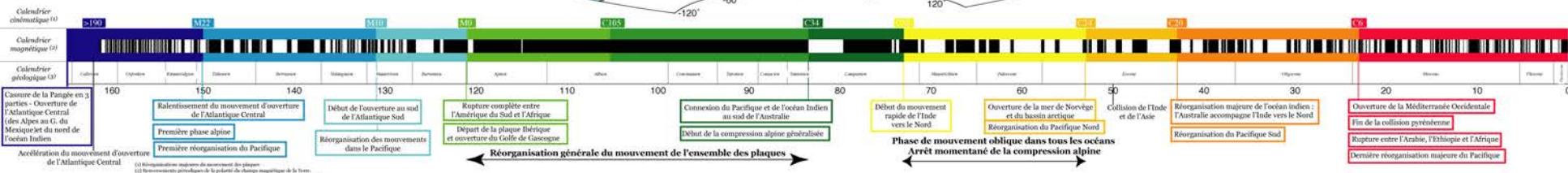
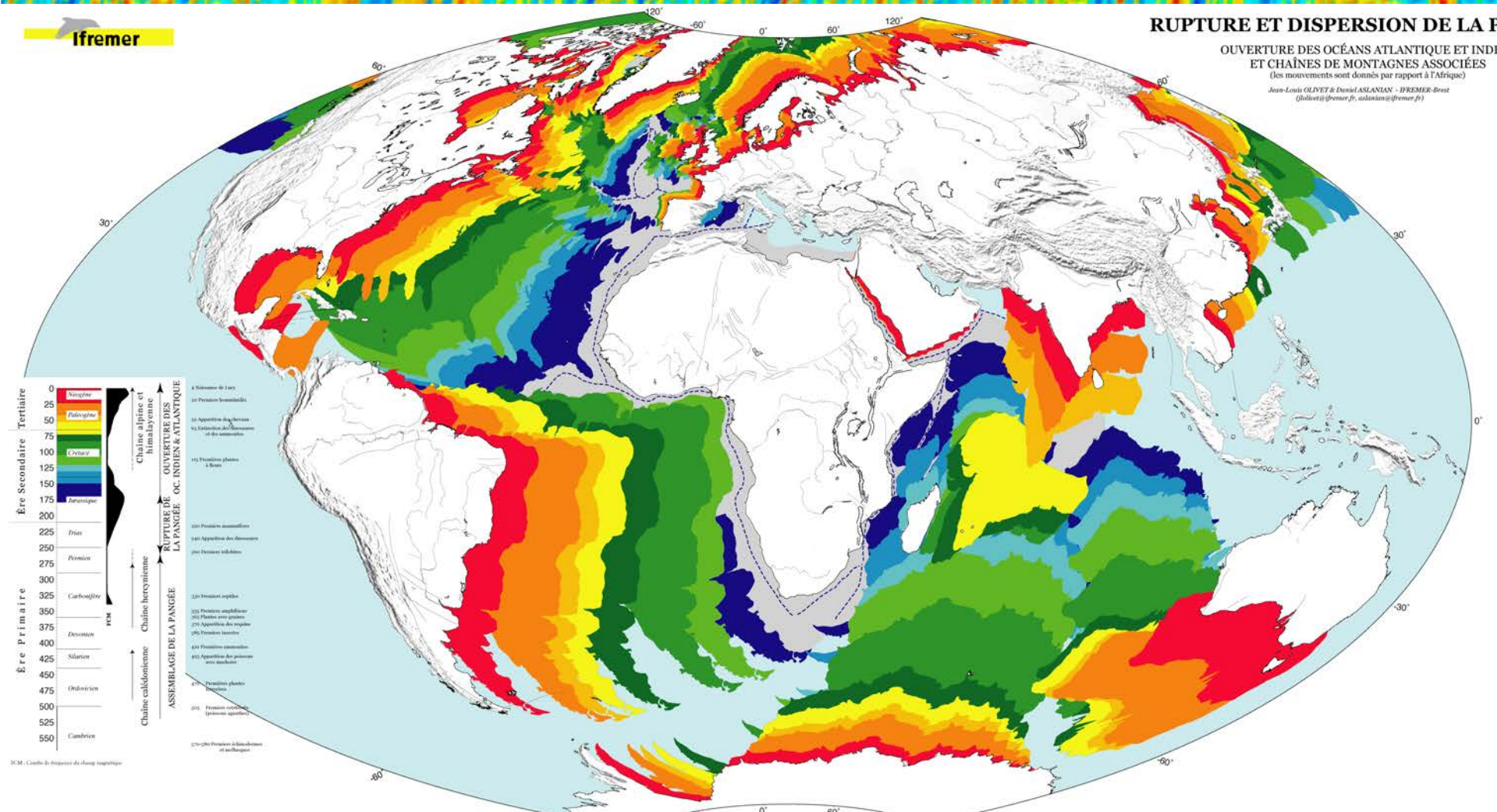


Ifremer

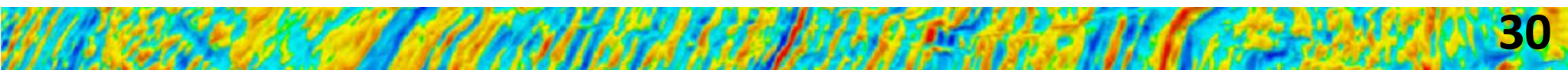
RUPTURE ET DISPERSION DE LA PANGÉE :

OUVERTURE DES OCÉANS ATLANTIQUE ET INDIEN
ET CHÂÎNES DE MONTAGNES ASSOCIÉES

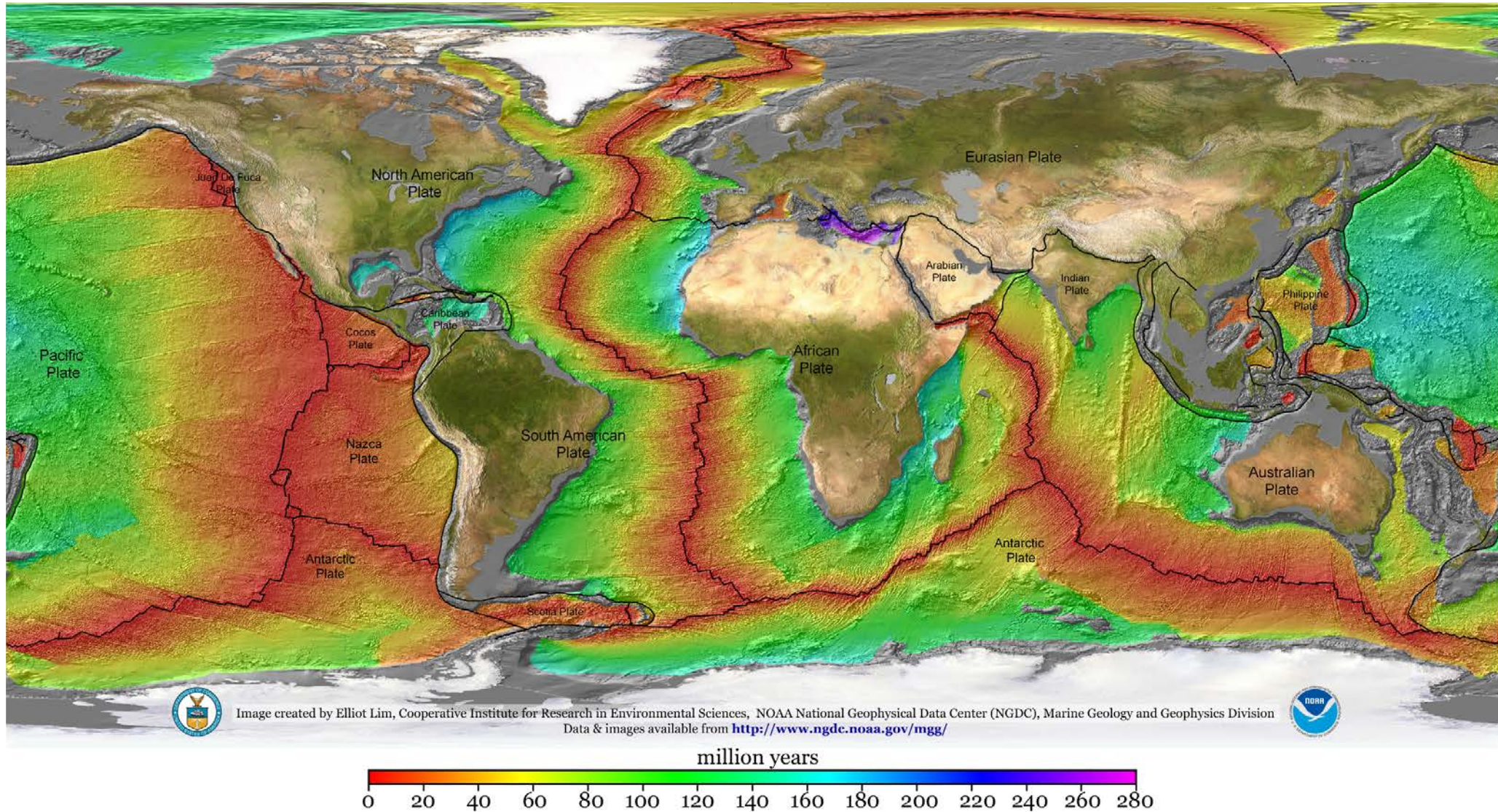
(les mouvements sont donnés par rapport à l'Afrique)
Jean-Louis OLIVET & Daniel ASLANIAN - IFREMER-Brest
(olivet@ifremer.fr, aslanian@ifremer.fr)



Olivet and Aslanian, 2000

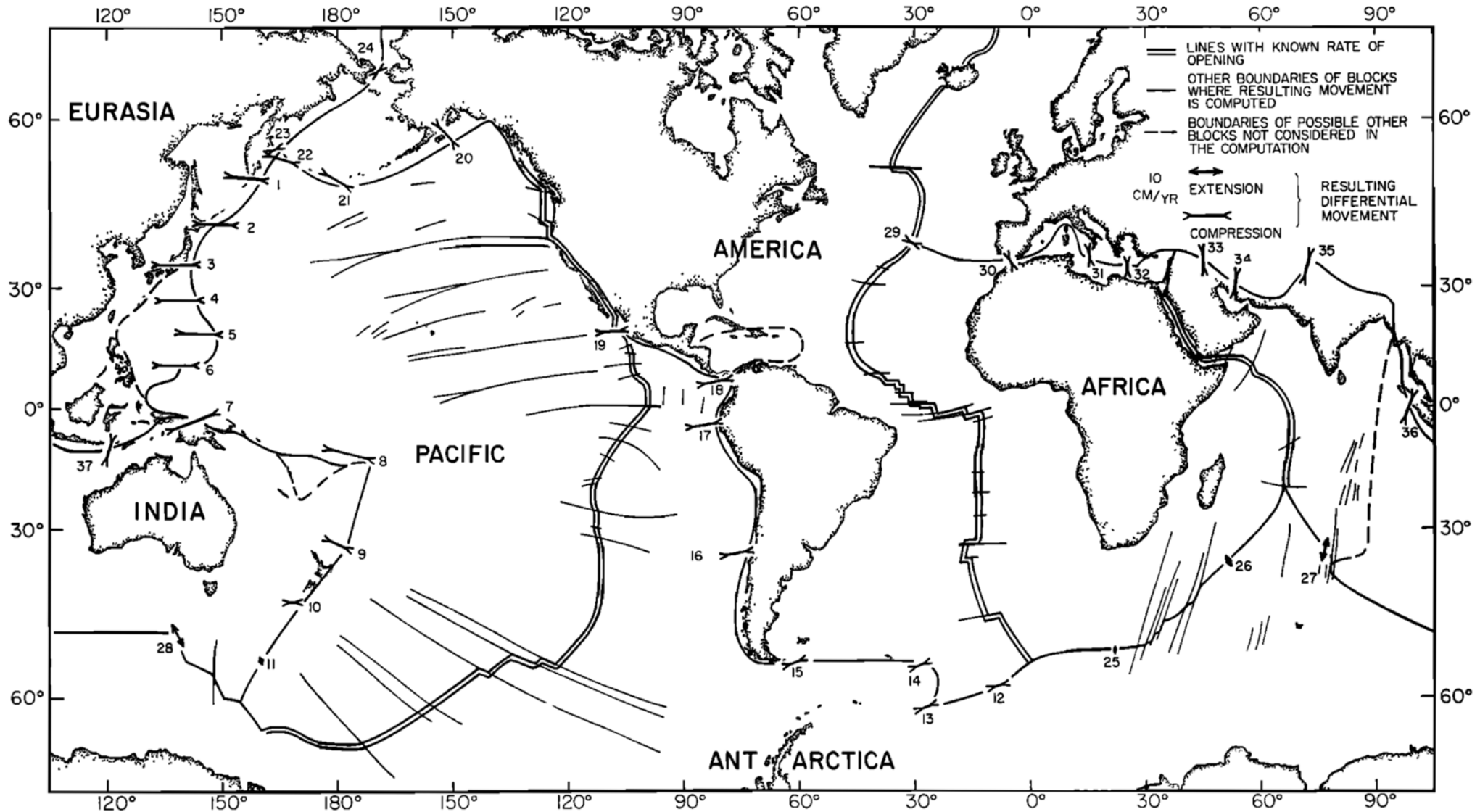


Age of the Oceanic Lithosphere



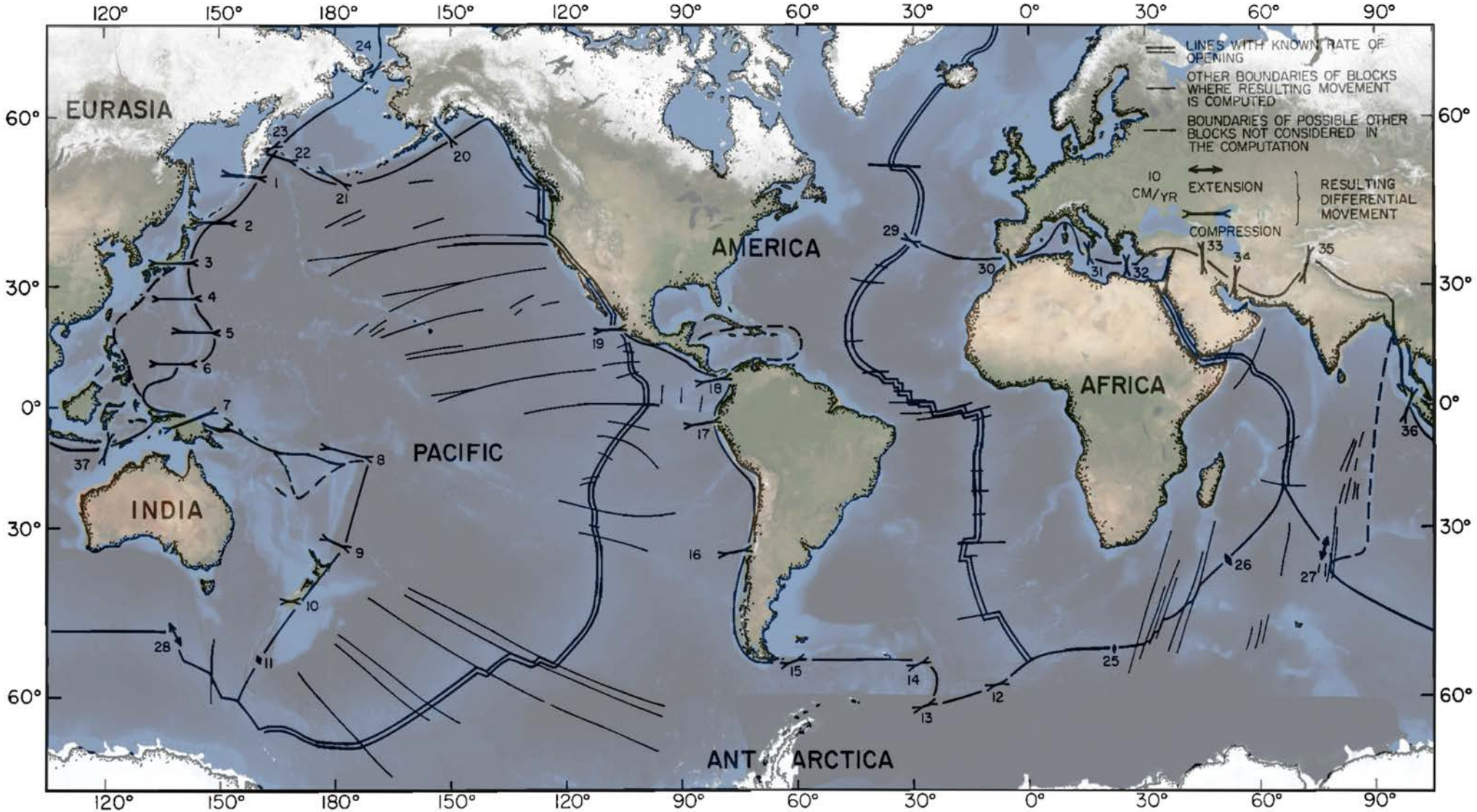
Courtesy NOAA, after Müller et al., 2008

Sea-floor spreading and continental drift

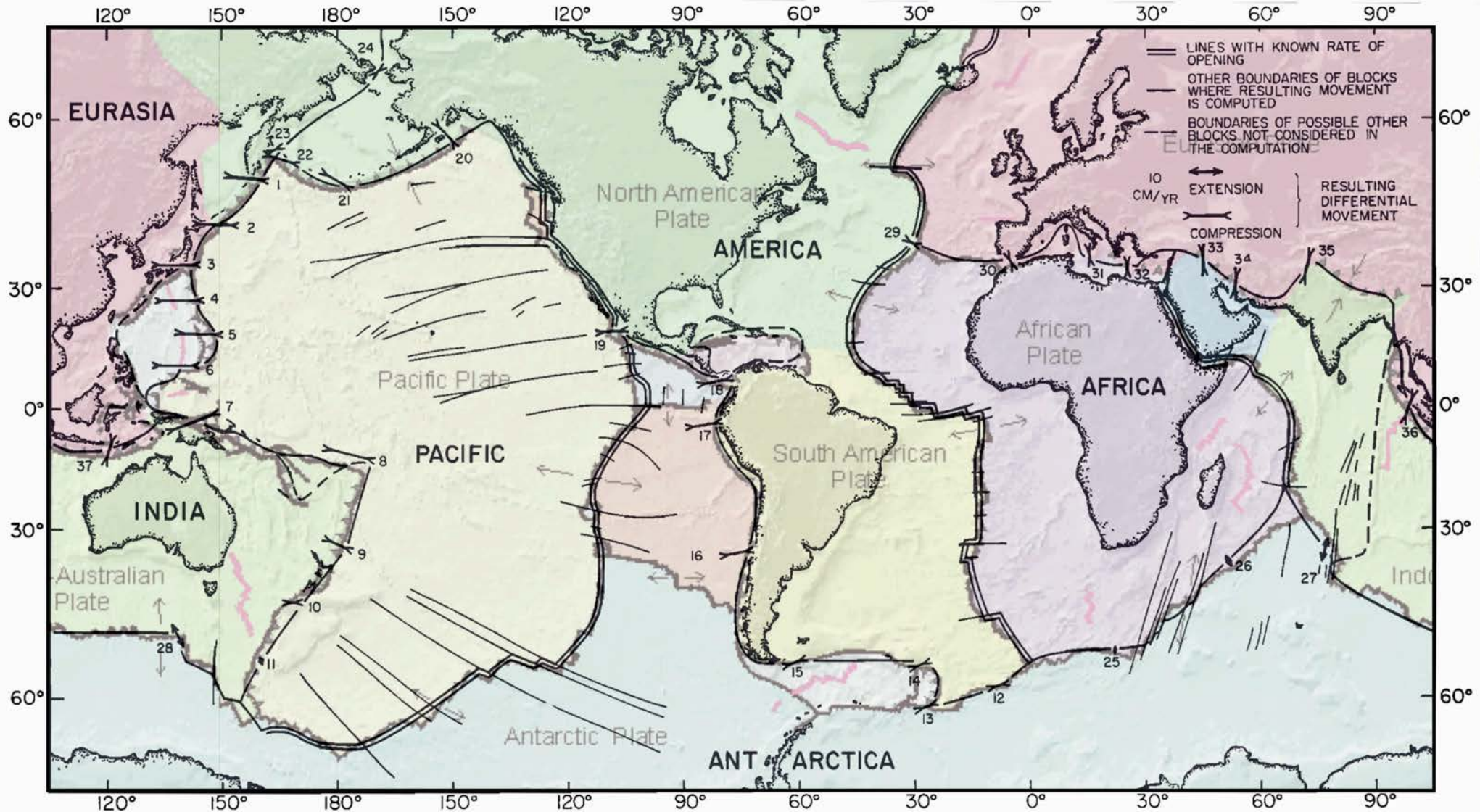


Le Pichon, JGR, 1968

Google



Tectonic Plates

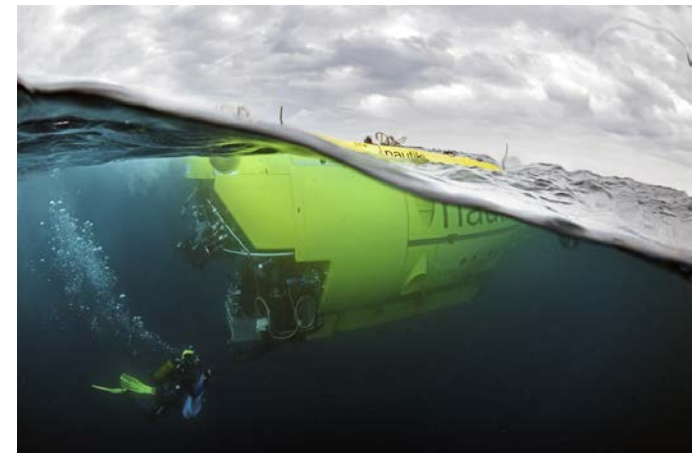
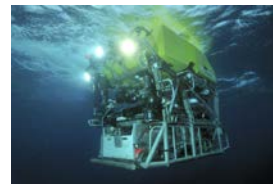


Comparing 6 plates in 1968 with 12 plates in 2008



Ifremer - Marine Geoscience Research

- understanding the geological evolution of the planet, of the mechanisms of formation of margins and of sedimentary transfer balances in relation to climate and tectonic variations;
- exploration dedicated to the understanding of geochemical cycles and the search for mineral resources;
- the study of marine geological hazards and the characterization of dynamic structures (active margins, seismicity, ..);
- participation in the technological developments necessary to undertake this research



Technical Capabilities

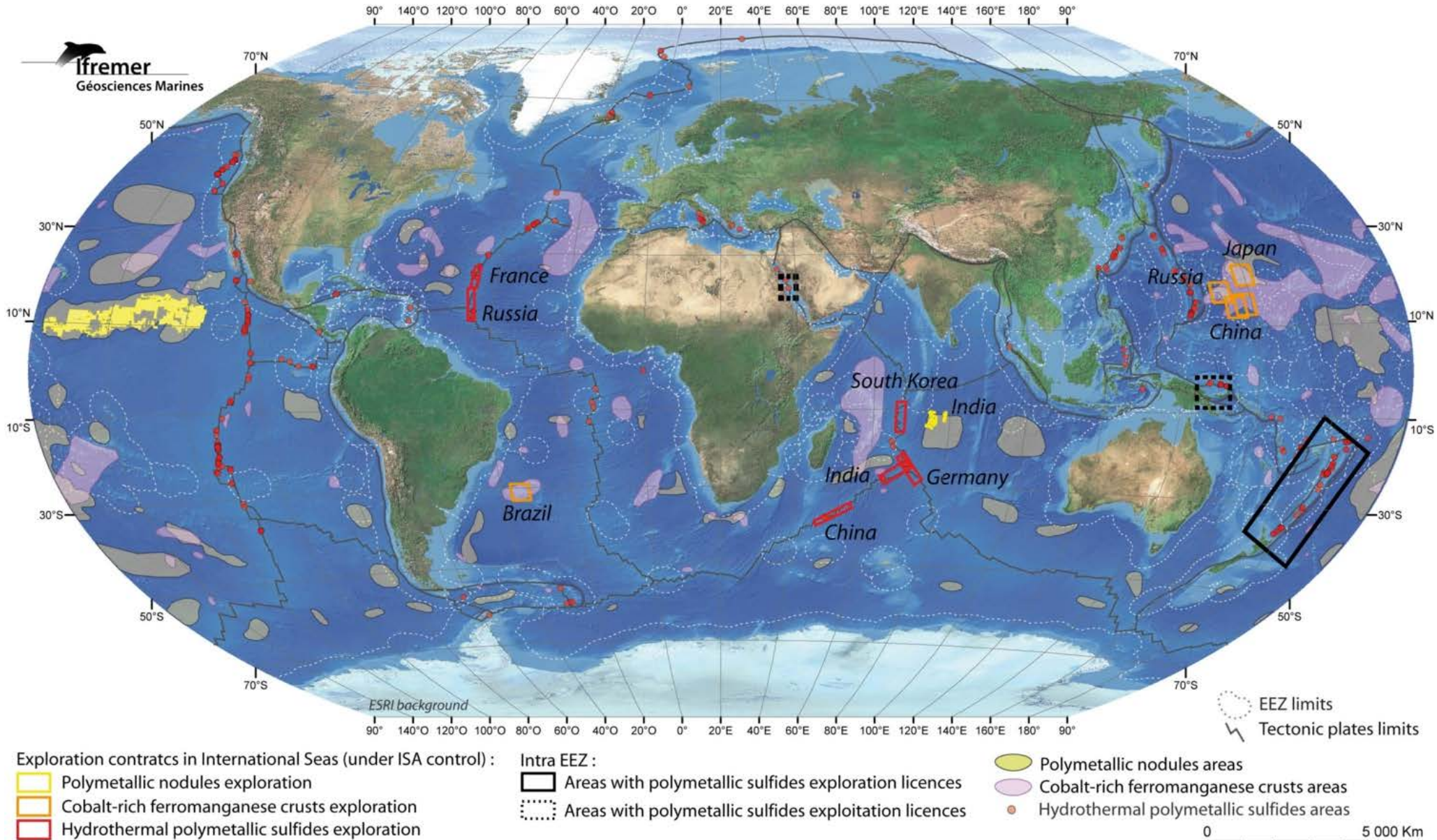
- The Ocean Spectrometry Pole, UBO (IUEM), CNRS and Ifremer
- Large pool of OBS
- Sediment core laboratory and storage facility
- Geotechnical probes and geotechnical laboratory, including gas hydrates research

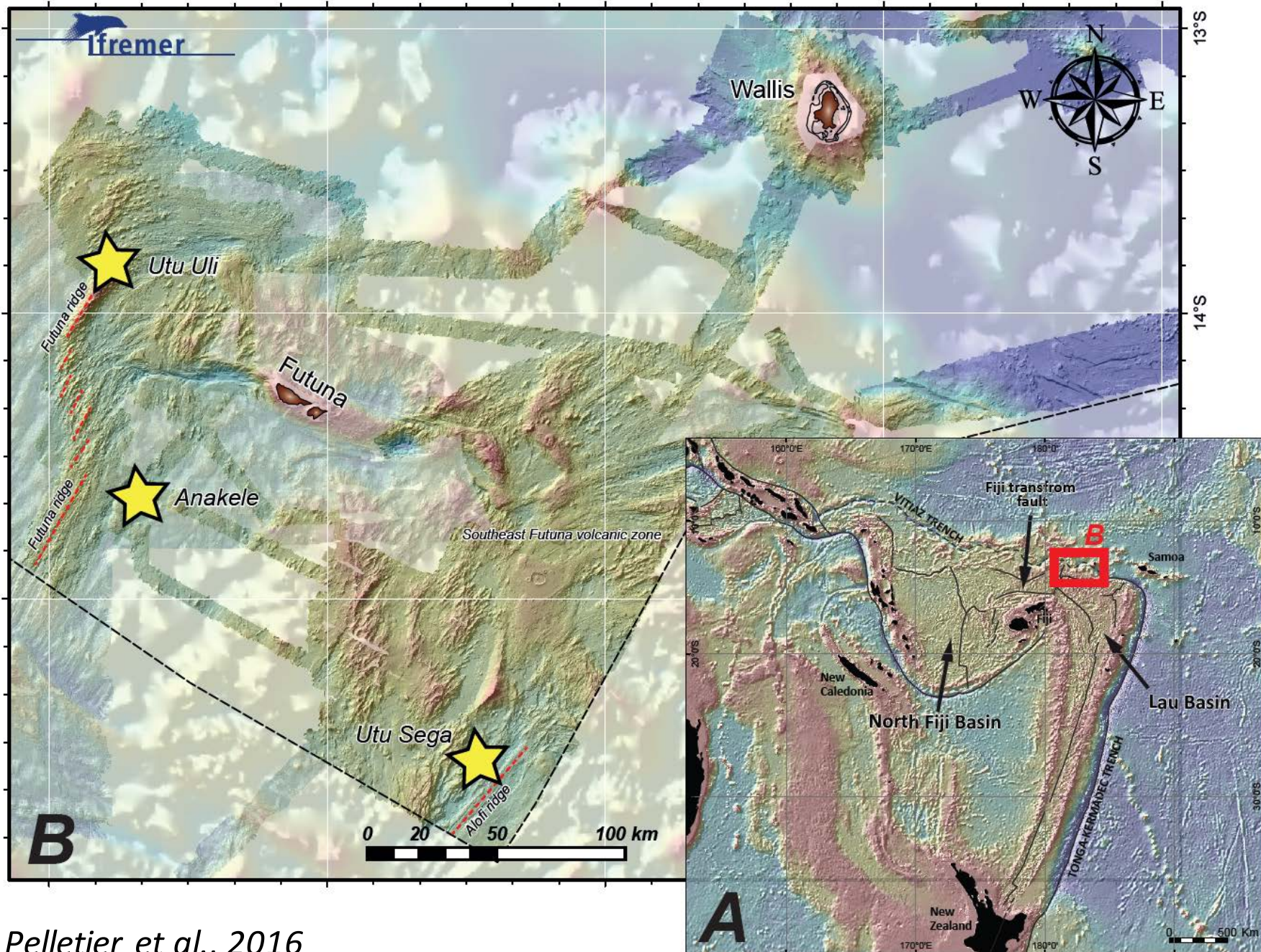


Recent Activities:

- Marine Minerals (ISA and EEZ)
- UNCLOS continental shelf

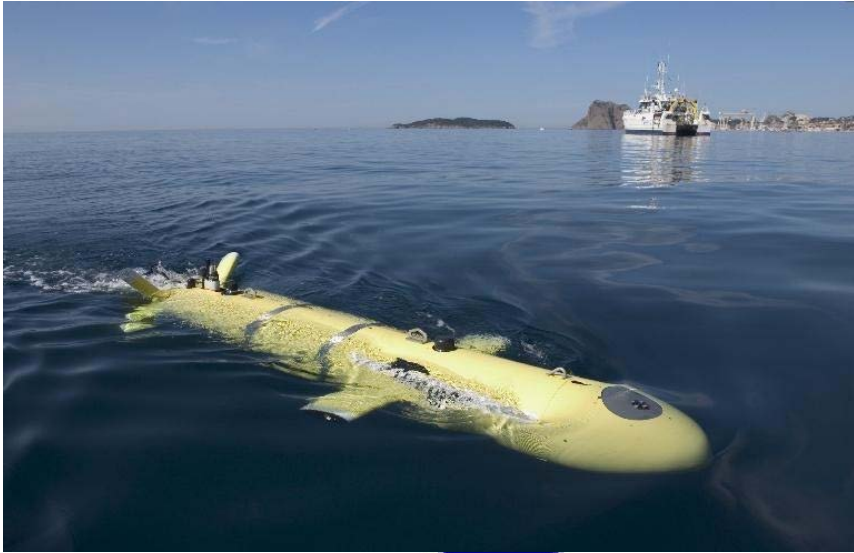
Minerals



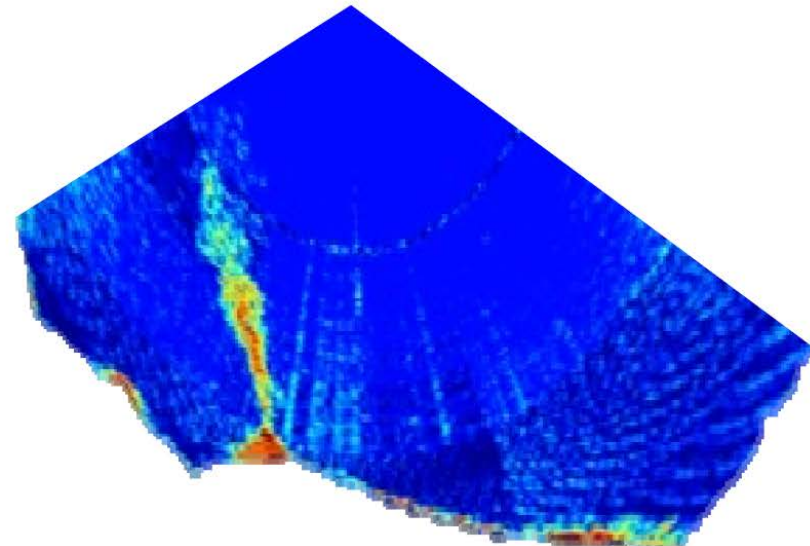
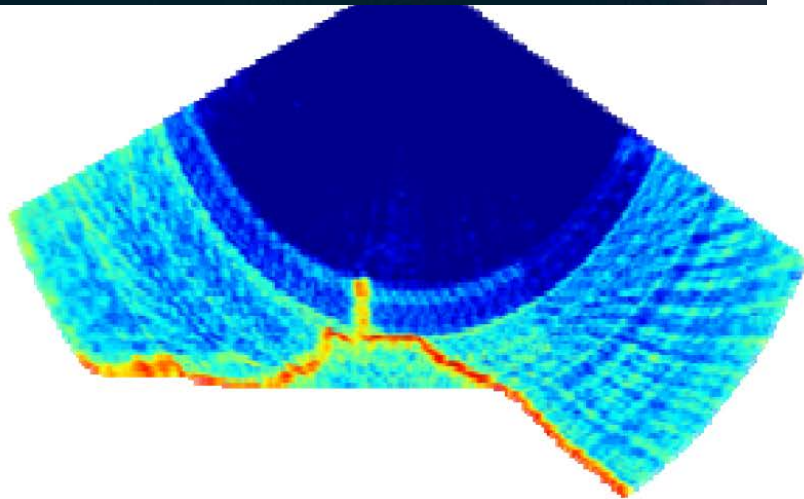


Pelletier et al., 2016

Hydrothermal Vents



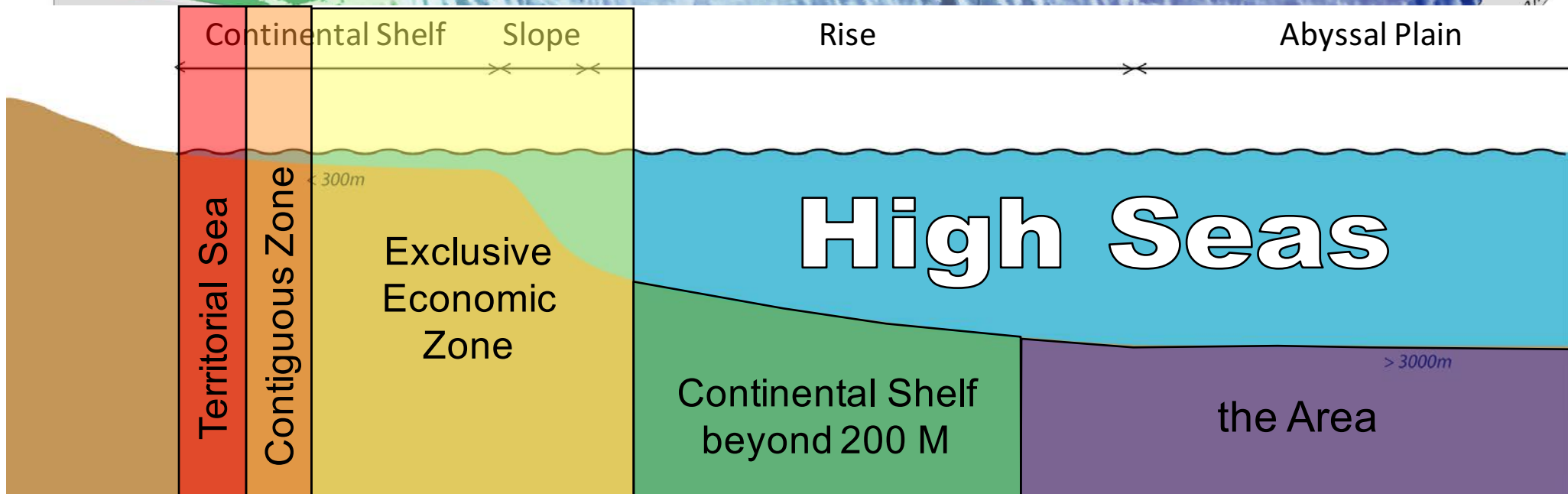
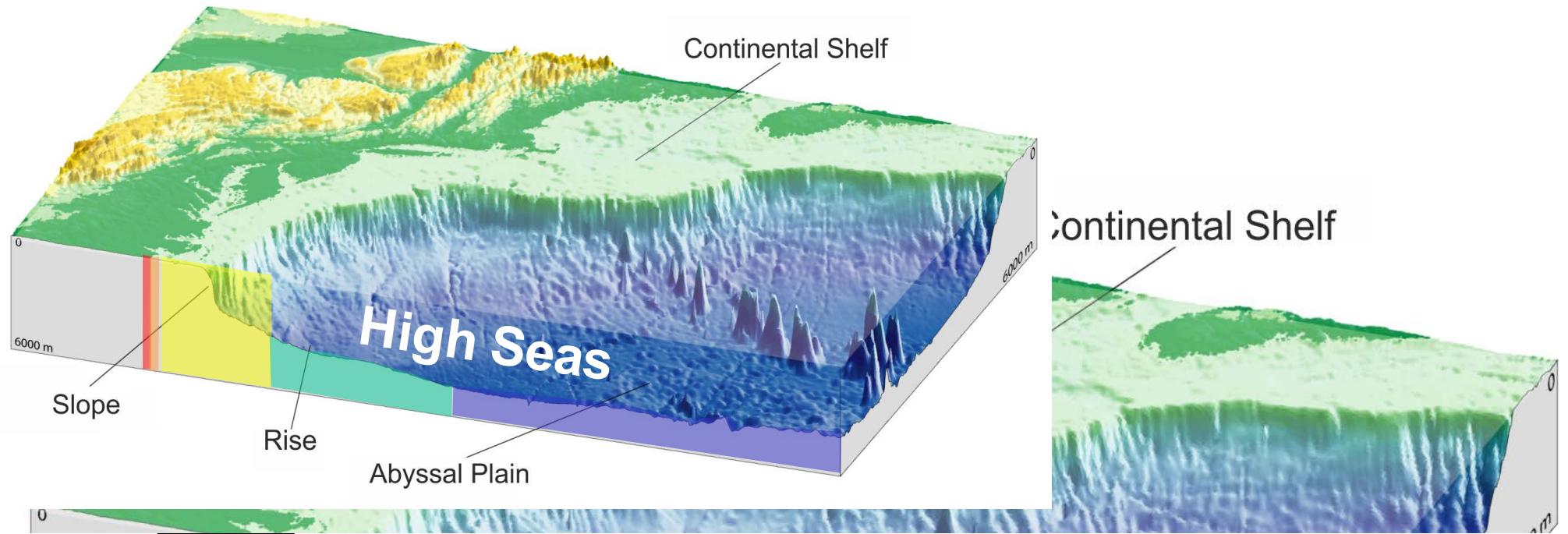
© Campagne Serpentine 2007/Ifremer-VICTOR

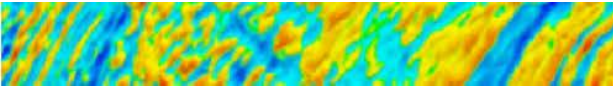


Polar echograms of EM2040 data: inactive chimney (left) and hydrothermal plume above active sulfide mound (right)

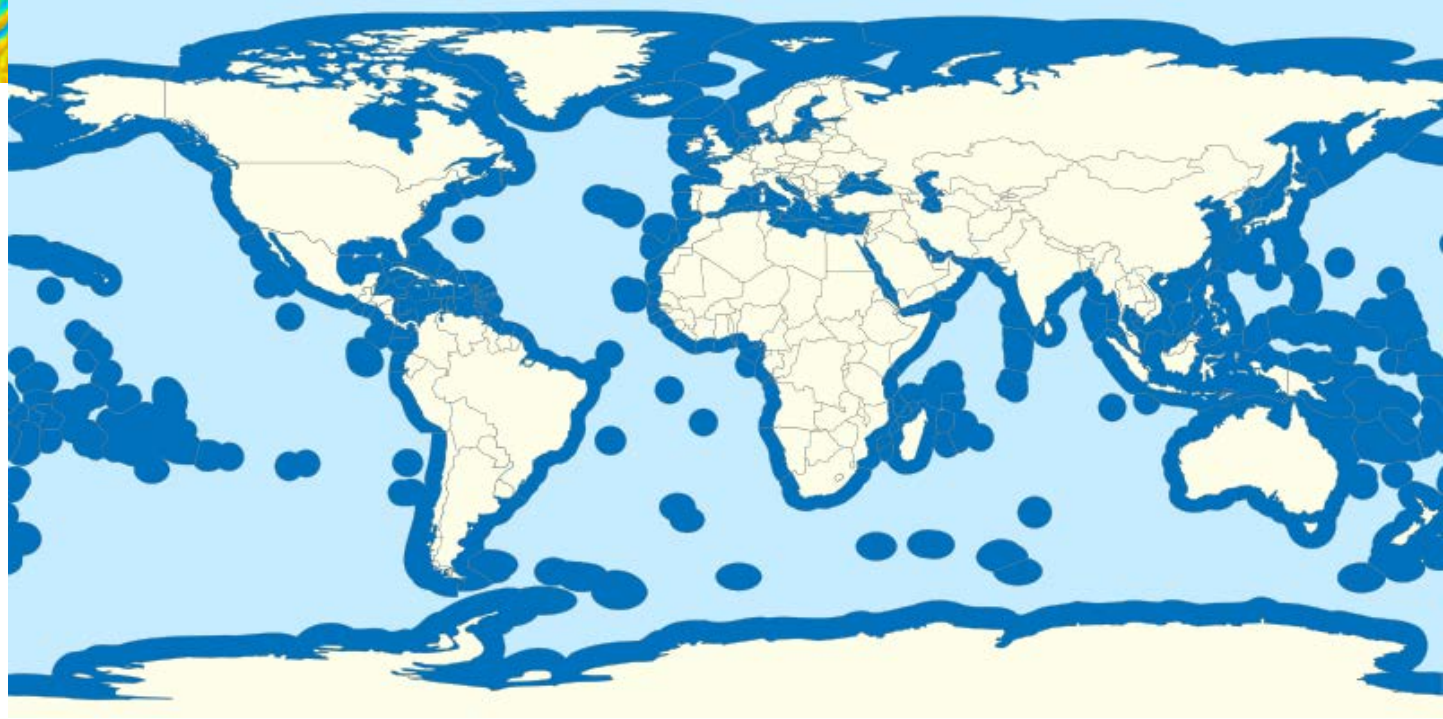
Fouquet et al,
2015 OTC-25933-MS

UNCLOS Article 76: the continental shelf





Some Numbers



- Global EEZ: ~ 120 million km^2
- Global Extended Shelf estimated at ~ 25 million km^2
- > 70 States have entitlement over continental shelf beyond 200 nautical miles
- 70 Submissions already lodged with the UN



Conclusions

- After 50 years, plate tectonic theory provides fundamentals tool for our understanding of the earth system
- Only a small percentage of the ocean floor is mapped to modern standards
- Therefore, there is a need to continue exploration, using modern tools
- Significant activities related to UNCLOS and the search for minerals

Thank you!

