

Cours 6 : Comportement actif des tissus

J.F. Joanny

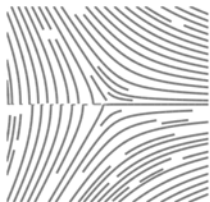
Cours 6, Collège de France, 15 mars 2021



COLLÈGE
DE FRANCE
— 1530 —



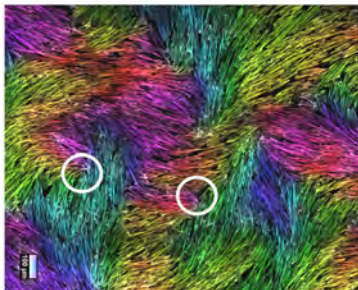
Défauts topologiques dans les tissus nématiques



$$S = -1/2, B = 0$$



$$S = 1/2, B = 0$$

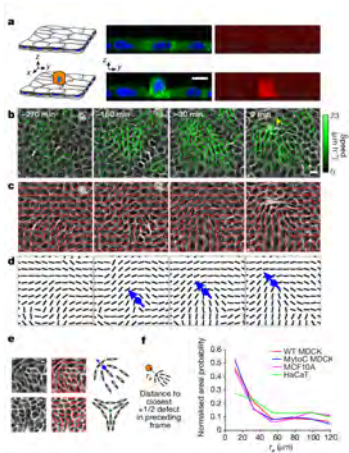


COLLÈGE
DE FRANCE
— 1530 —



Trinish Sarkar

Défauts topologiques et division cellulaire



Saw et al.

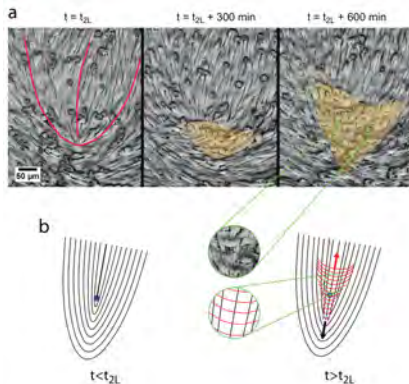


Figure 3

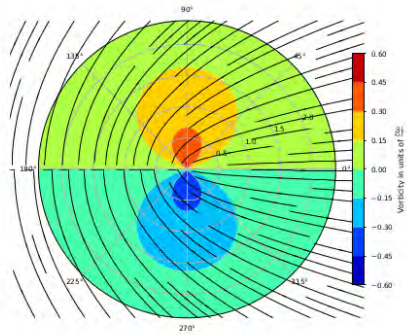
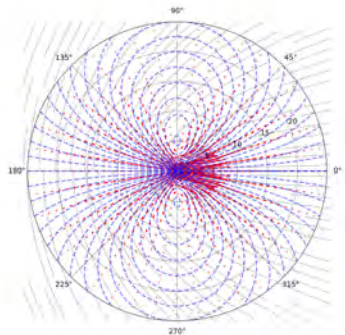
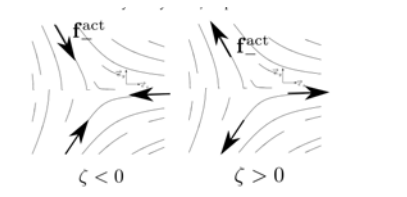
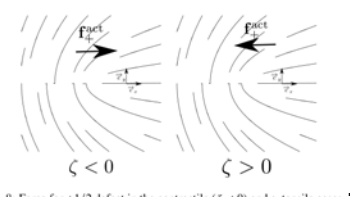
Sarkar et al.



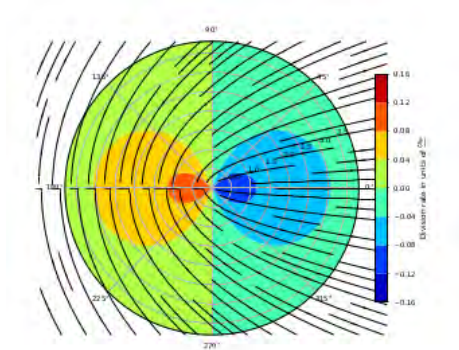
COLLÈGE
DE FRANCE
— 1530 —



Défauts topologiques dans un nématif actif *L. Brezin*



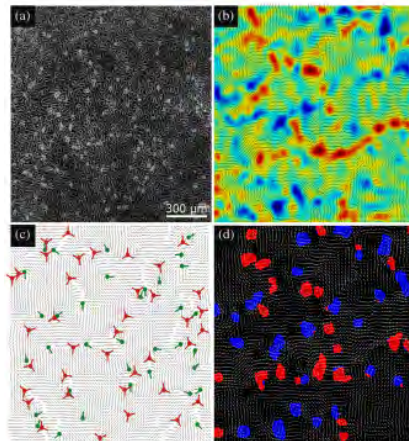
Division cellulaire et contrainte active active



COLLÈGE
DE FRANCE
— 1530 —



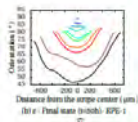
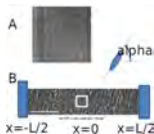
Turbulence active *C. Blanch-Mercader, V. Yashunsky*



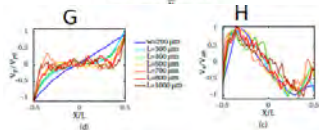
COLLÈGE
DE FRANCE
— 1530 —



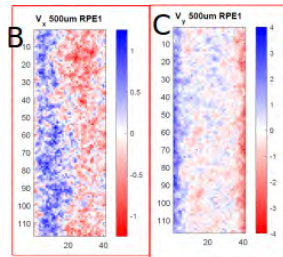
Écoulements spontanés dans les tissus *G. Duclos, C. Blanch-Mercader et al.*



(b) c - Panel (a) ($\alpha=0$), RPE-1



- Largeur de la bande $50\mu\text{m}$ to $800\mu\text{m}$
- Orientation des cellules
- PIV



COLLÈGE
DE FRANCE
— 1530 —

